

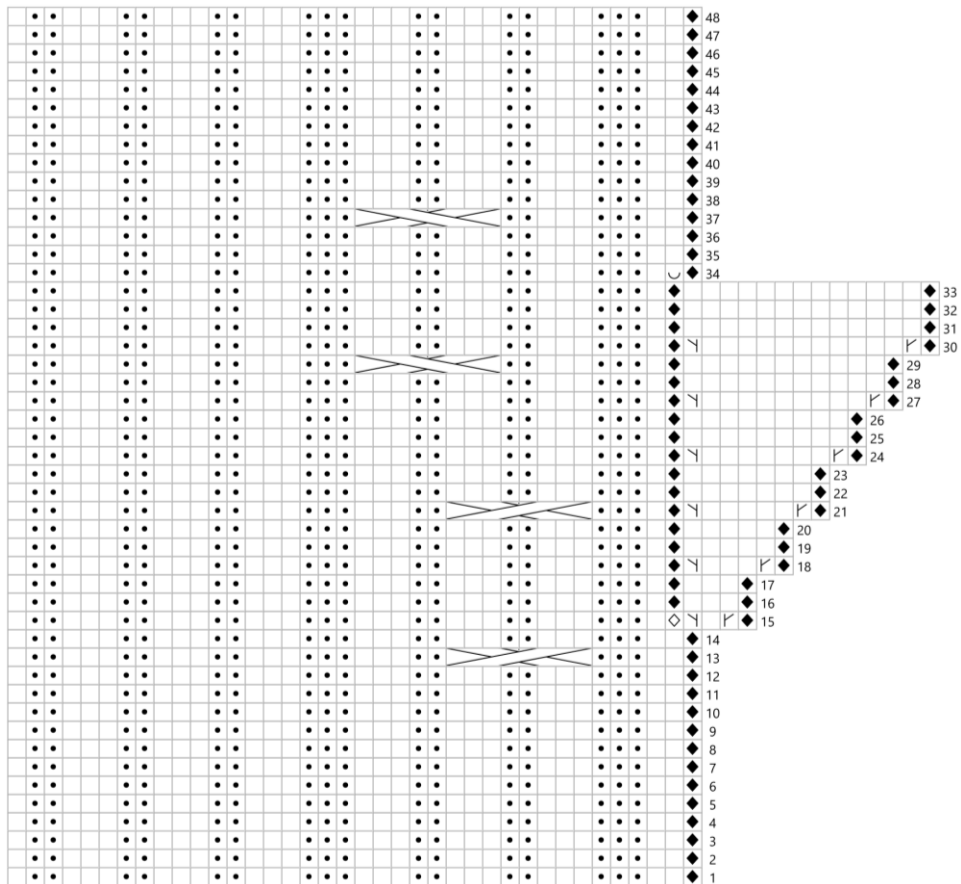


Supplement to written Riptide Mitt Pattern: Charted Version

Cast on 37 stitches, place marker and join to work in the round. Work the charts from their bottom right hand corner. On row 34: remove marker, place the 13 thumb stitches on a stitch holder, then continue with chart. At end of chart, cast off all stitches in pattern (i.e. knitting the knit stitches and purling the purls).

- knit
- purl
- slip marker
- place marker
- m1 right leaning
- m1 left leaning
-  3/2/3 LPC
-  3/2/3 RPC
- cast on

Left mitt



Right mitt

